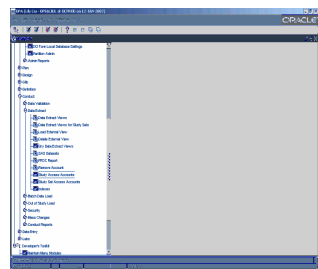


Among over 100 active studies in C3D, 26 of them report to CTMS, 22 report to CDUS/CDS. Even though their submission guidelines are different, the same extraction tool is used with different approaches behind the scene. These studies are built using template forms whose data fields have been mapped to the electronic submission files and fields. These mappings are customized and maintained for each study to accommodate study specific changes.

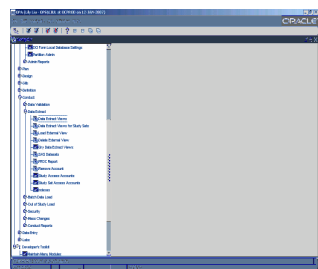
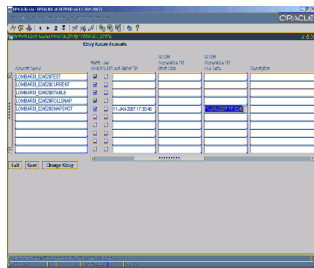
Step 1: Generate Snapshot view in Oracle Clinical

Snapshot views include all study data at certain point in time. Extraction views are built on top of snapshot views, study level mappings are implemented in extraction views.



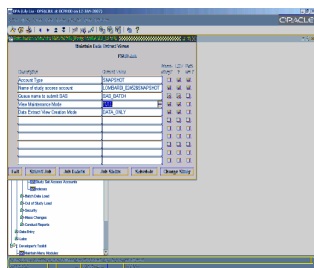
1.1. Configure Study Access Accounts.

1.2. Use last Batch Validation timestamp for both Last Batch TS and RDCM Accessible TD End Date.



1.3. This is the menu path to Extract Snapshot views in Oracle Clinical.

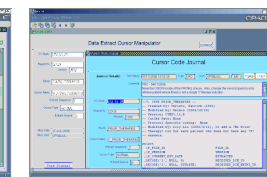
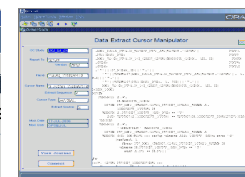
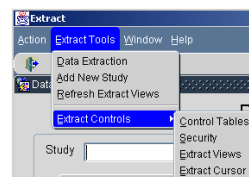
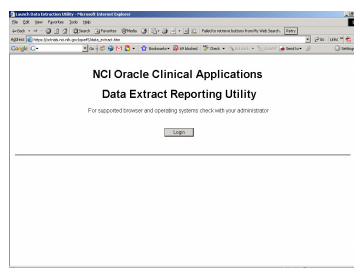
1.4. Make sure to pick FULL from View Maintenance Mode LOV.



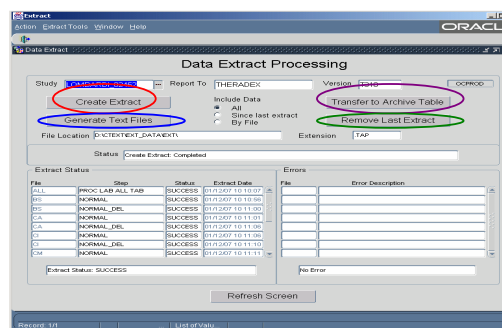
Step 2. Using Extract Utility to extract data from C3D

CTMS submission is an incremental bi-weekly process. Both deletion records as well as updated records generated after last submission must be submitted; CDUS/CDS submission requires for quarterly cumulative data. All data submitted from previous quarters must be submitted in subsequent quarters. Submissions may contain new data as well as updates to previous submitted data.

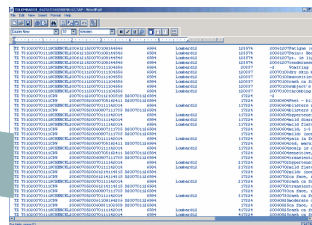
2.1. Log into Data Extract Application. 2.2 Create a data extract. Use the Refresh Button to refresh the Status field. Study level changes are made through Extract Views and Extract Cursors. Open the Journal window to see all changes.



2.5. Create a flat file of the extracted data. The File Location field contains the destination of the output files.



2.3. Extracted Data from the temporary extract tables to the archive tables. Once this process is done, QA workbooks are available in Oracle Discoverer.



2.4. Removes the most recently extracted Dataset from the archive table. Needed only When data need to be updated and snapshot View need to be re-generated.

